



01 Highway 1 & Highway 41

- **Event Pre-Notification** Highway 1 Northbound Before Intersection
 - **Cycling Event Ahead** Highway 1 Northbound Before Intersection
- Place the above Event Pre-Notification and Cycling Event Ahead signs near the South end of the median between the northbound lane of Highway 1 and the Highway 41 exit ramp to be visible by vehicles using both.
- **Cycling Event Ahead** On Ramp Northbound After Intersection
 - **Cycling Event Ahead** Highway 41 Westbound Before Intersection



02 Highway 1 & Old Creek Road

■ Cycling Event Ahead Old Creek Rd. Northbound After Houses



03 Highway 1 & 13th Street

■ Cycling Event Ahead Highway 1 Southbound After the 13th Street Bridge



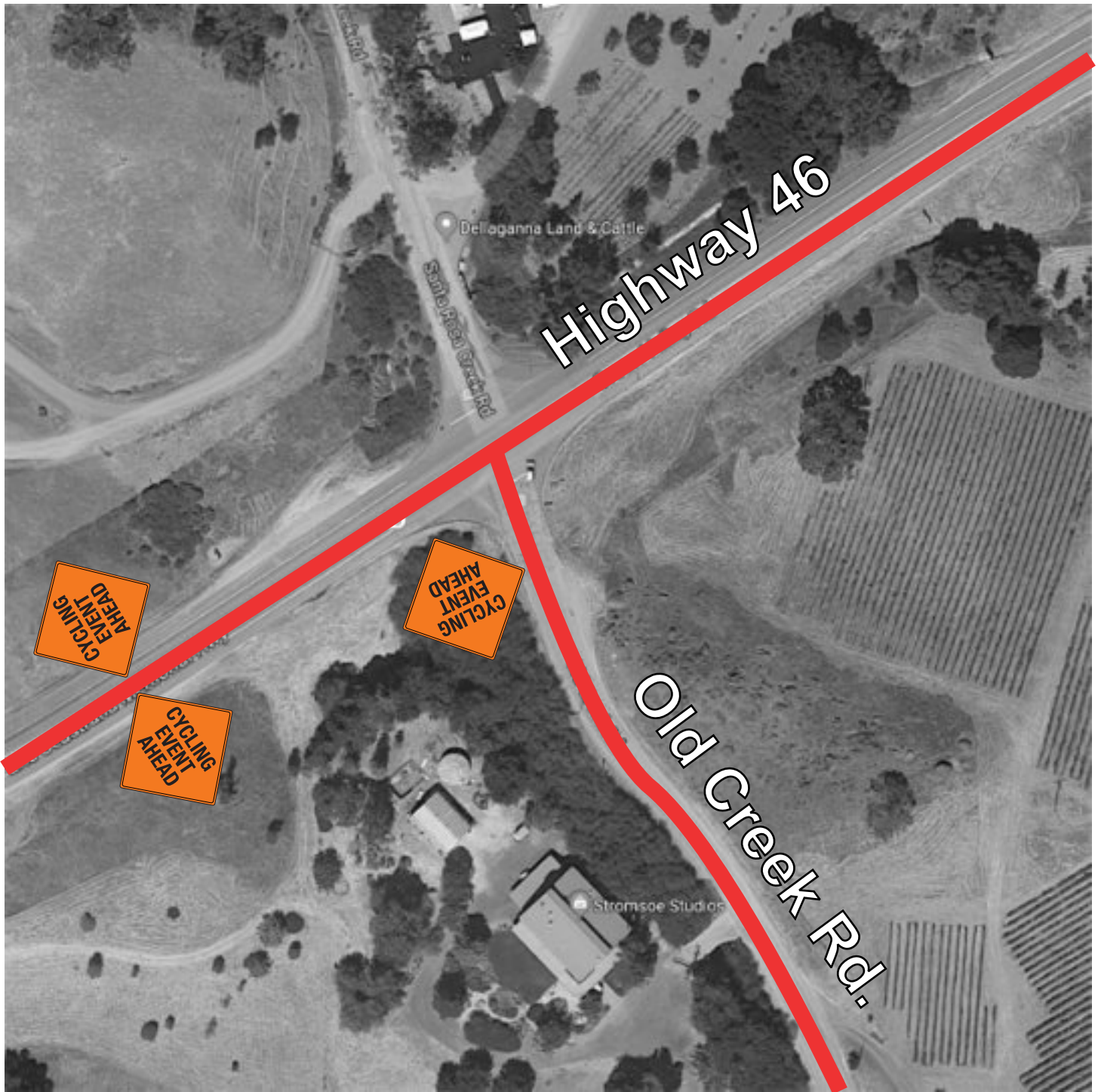
04 Highway 1 & N Ocean Ave.

- Cycling Event Ahead Highway 1 Northbound After Intersection
- Cycling Event Ahead N Ocean Ave. Southbound After Intersection



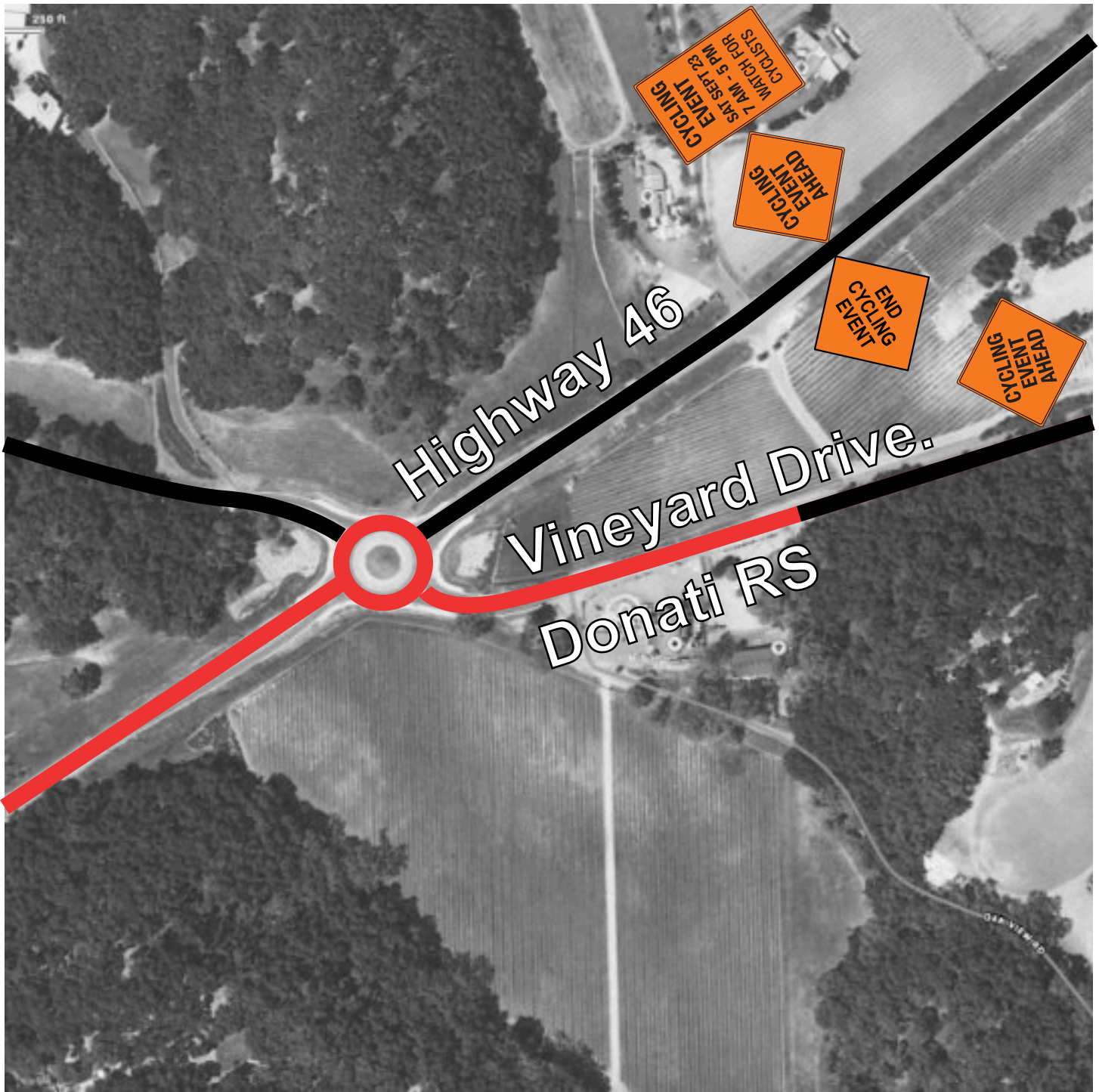
05 Old Creek Road & Santa Rita Road

- **Event Pre-Notification** Old Cheek Rd. Northbound After Intersection
 - **Cycling Event Ahead** Old Cheek Rd. Northbound After Intersection
- Place in the dirt area right after the intersection.



06 Highway 46 & Old Creek Road

- Cycling Event Ahead Highway 46 Eastbound Before Intersection
- Cycling Event Ahead Highway 46 Westbound After Intersection
- Cycling Event Ahead Old Cheek Rd. Southbound After Intersection (In open area just after the intersection)



07 Highway 46 & Vineyard Drive

- | | | | |
|--------------------------|--------------|------------|---------------------|
| ■ Event Pre-Notification | Highway 46 | Westbound | Before Intersection |
| ■ Cycling Event Ahead | Highway 46 | Westbound | Before Intersection |
| ■ End Cycling Event | Highway 46 | Eastbound | After Intersection |
| ■ Cycling Event Ahead | Vineyard Dr. | Northbound | Before Donati RS |



08 Highway 1 & Highway 46

- Cycling Event Ahead Highway 1 Northbound After Intersection
- Cycling Event Ahead Highway 1 Southbound After Intersection



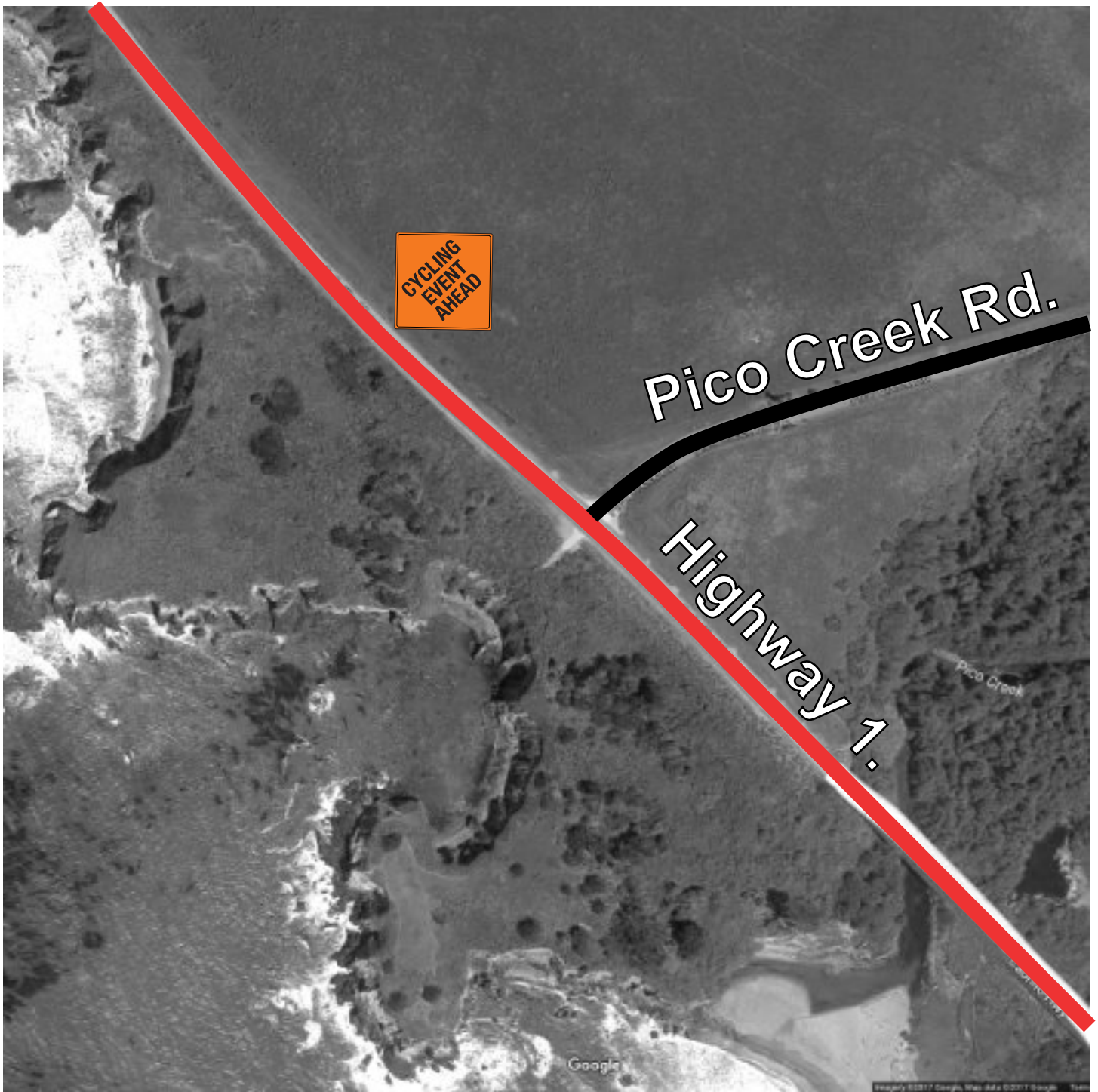
09 Highway 1 & Moonstone Beach Drive

- Cycling Event Ahead Highway 1 Northbound After Intersection
- Cycling Event Ahead Moonstone Southbound After Intersection



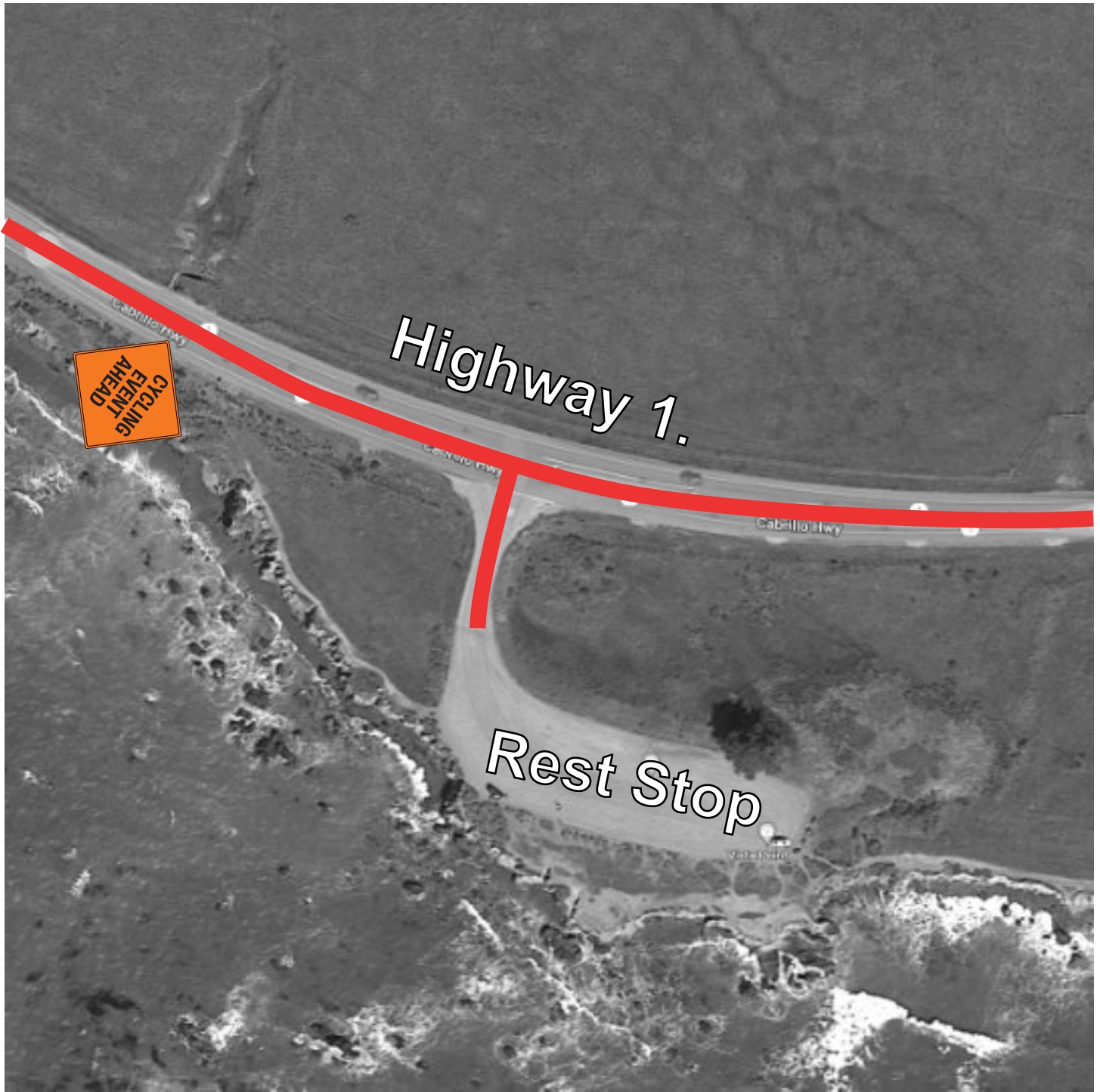
10 Highway 1 & Vista Del Mar

■ Cycling Event Ahead Highway 1 Southbound After Intersection



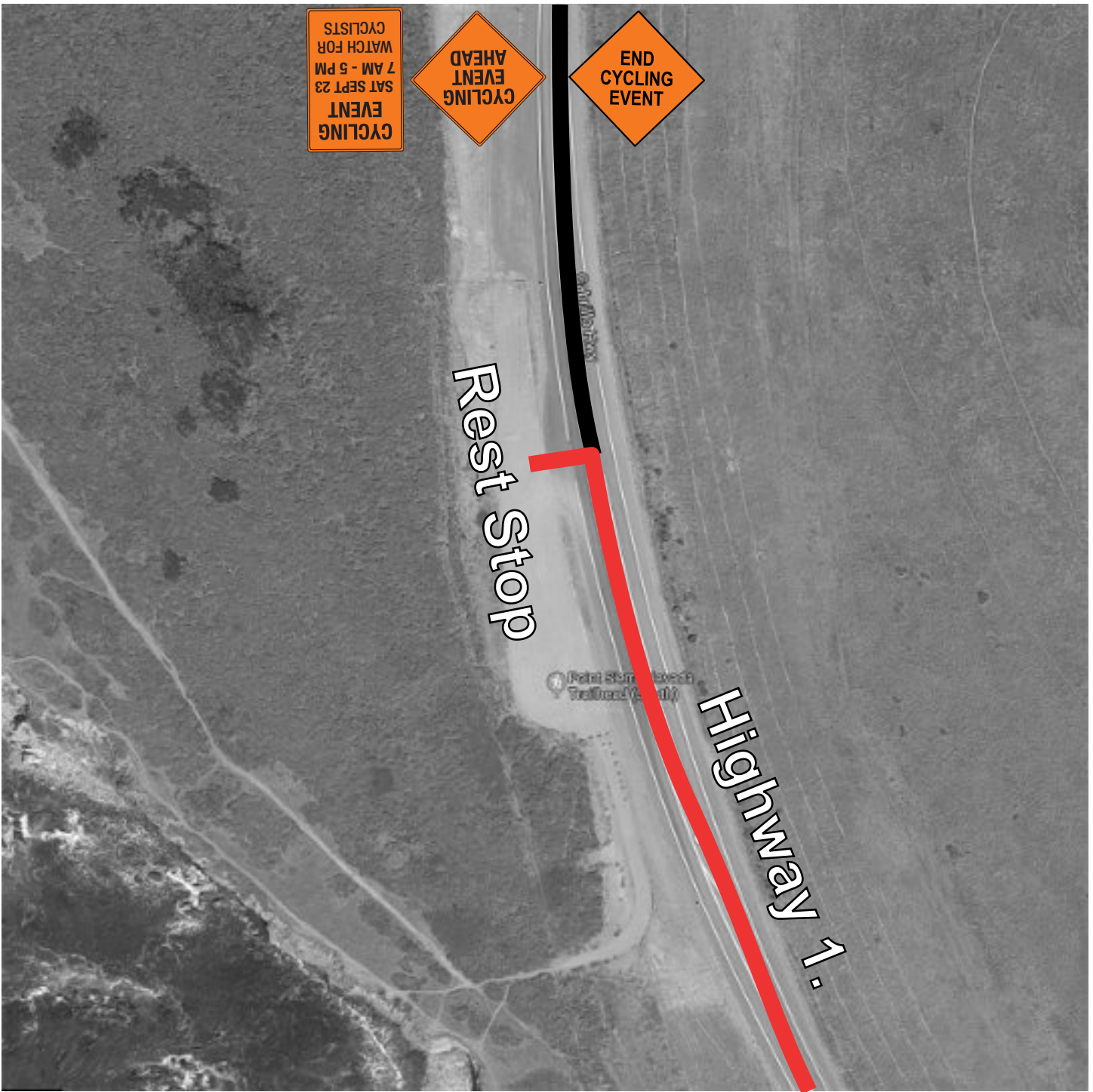
11 Highway 1 & Pico Creek Road

- Cycling Event Ahead Pico Creek Rd. Northbound After Intersection



12 Highway 1 @ Vista Point - Cypress Tree RS

■ Cycling Event Ahead Highway 1 Southbound Before Vista Point - Rest Stop



13 Highway 1 @ La Cruz RS

- **Event Pre-Notification** Highway 1 Southbound Before La Cruz Rest Stop
- **Cycling Event Ahead** Highway 1 Southbound Before La Cruz Rest Stop
- **End Cycling Event** Highway 1 Northbound After La Cruz Rest Stop

La Cruz Rest Stop Coordinates: 35.704801, -121.304563