

# Lighthouse Century Traffic Control Intersections

Event Date: Saturday, September 28, 2024

CalTrans Permit Number:

San Luis Obispo Bicycle Club

5/13/24



## 01 Highway 1 & Highway 41

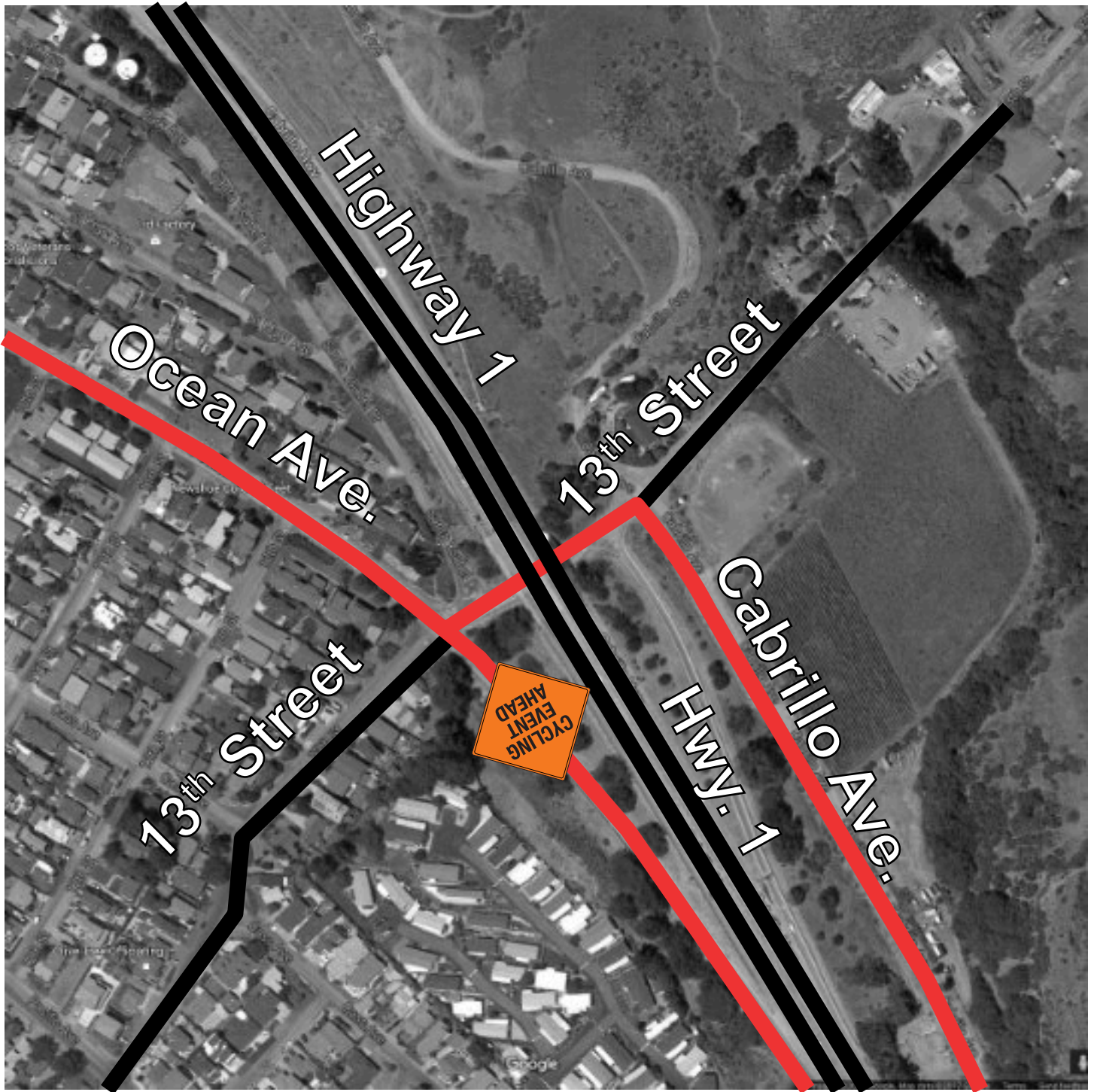
- **Event Pre-Notification** Highway 1 Northbound Before Intersection
  - **Cycling Event Ahead** Highway 1 Northbound Before Intersection
- Place the above Event Pre-Notification and Cycling Event Ahead signs near the South end of the median between the northbound lane of Highway 1 and the Highway 41 exit ramp to be visible by vehicles using both.
- **Cycling Event Ahead** On Ramp Northbound After Intersection
  - **Cycling Event Ahead** Highway 41 Westbound Before Intersection



## 02 Highway 1 & Old Creek Road

■ Cycling Event Ahead    Old Creek Rd. Northbound    After Houses





## 03 Highway 1 & 13<sup>th</sup> Street

■ Cycling Event Ahead    Highway 1    Southbound    After the 13<sup>th</sup> Street Bridge



## 04 Highway 1 & N Ocean Ave.

- Cycling Event Ahead Highway 1 Northbound After Intersection
- Cycling Event Ahead N Ocean Ave. Southbound After Intersection



## 05 Highway 1 & Highway 46

- Cycling Event Ahead Highway 1 Northbound After Intersection
- Cycling Event Ahead Highway 1 Southbound After Intersection





# 06 Highway 1 & Moonstone Beach Drive

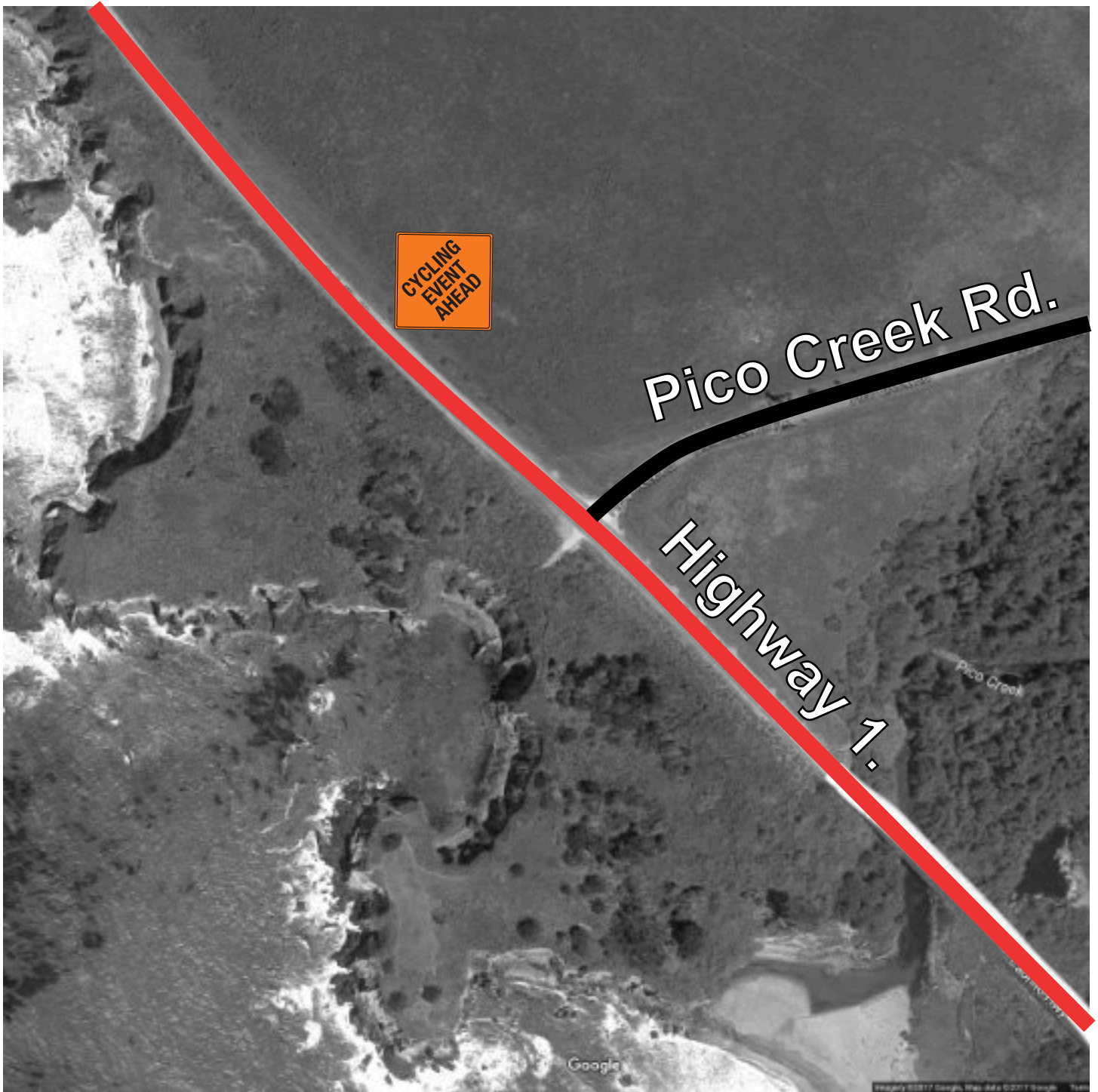
- Cycling Event Ahead Highway 1 Northbound After Intersection
- Cycling Event Ahead Moonstone Southbound After Intersection



# 07 Highway 1 & Vista Del Mar

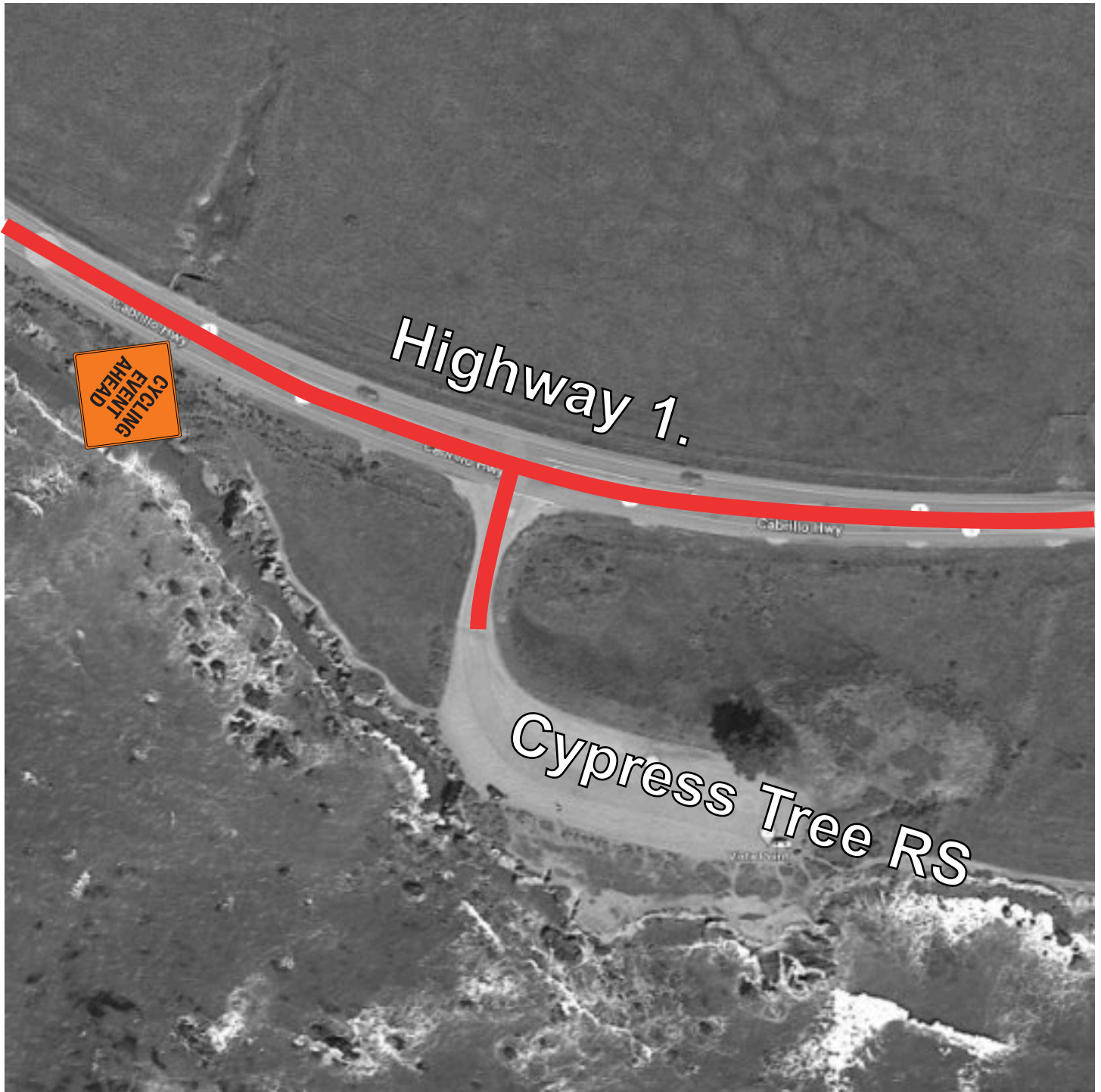
■ Cycling Event Ahead Highway 1 Southbound After Intersection





## 08 Highway 1 & Pico Creek Road

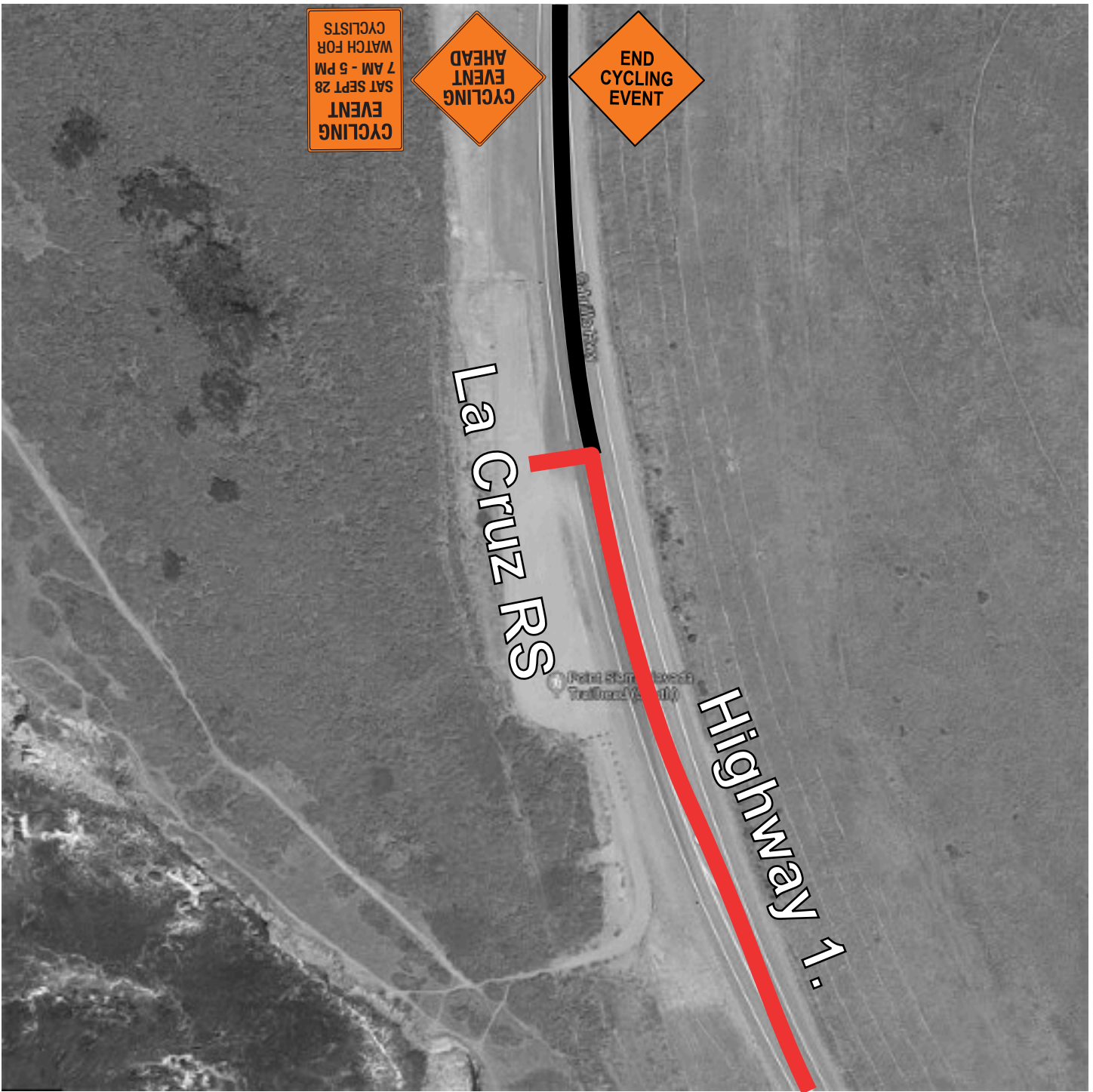
■ Cycling Event Ahead Highway 1 Northbound After Intersection



## 09 Highway 1 @ Vista Point - Cypress Tree RS

■ Cycling Event Ahead Highway 1 Southbound Before Rest Stop Entry



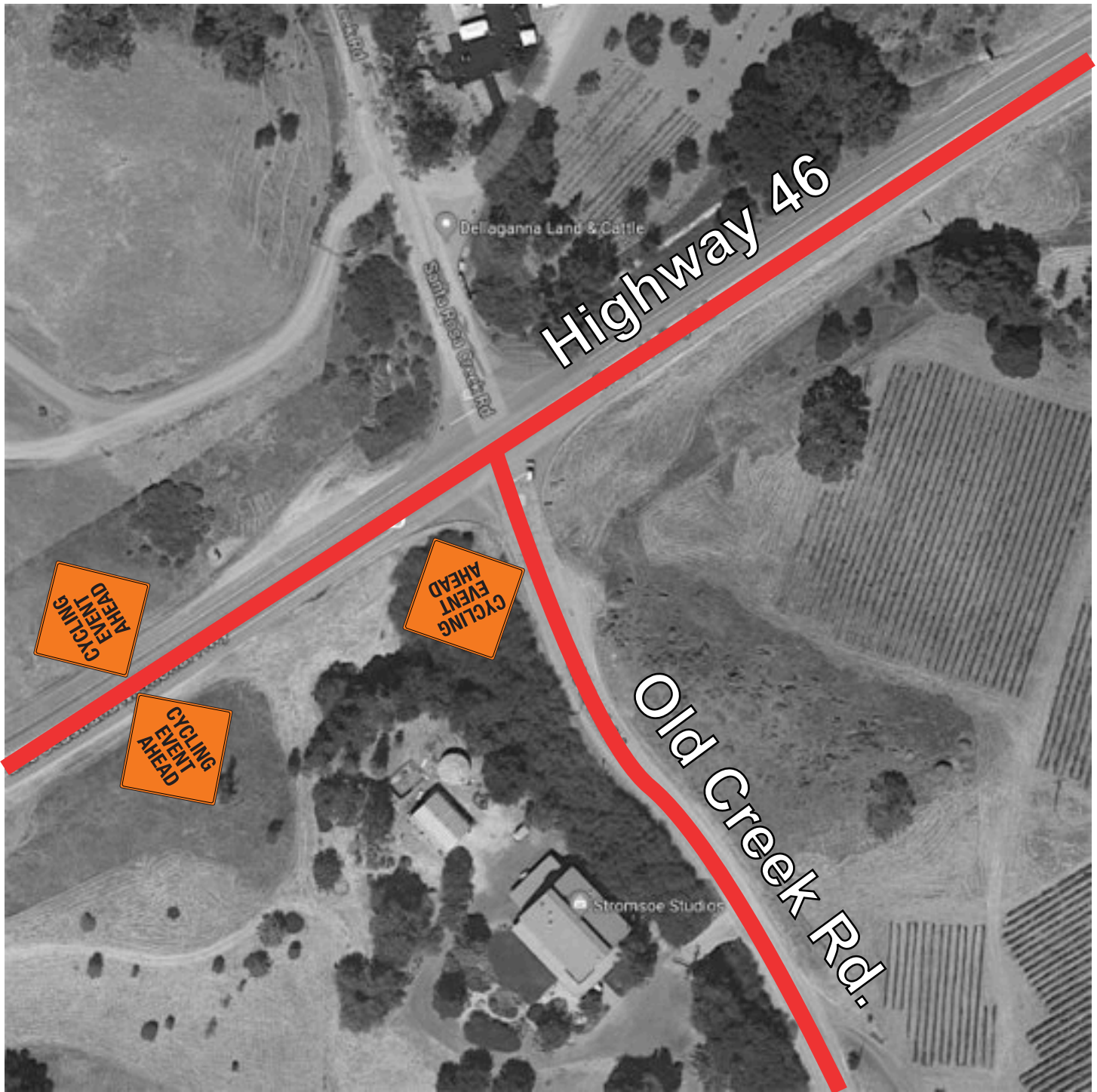


## 10 Highway 1 @ La Cruz Rest Stop

- **Event Pre-Notification** Highway 1 Southbound Before La Cruz Rest Stop
- **Cycling Event Ahead** Highway 1 Southbound Before La Cruz Rest Stop
- **End Cycling Event** Highway 1 Northbound After La Cruz Rest Stop

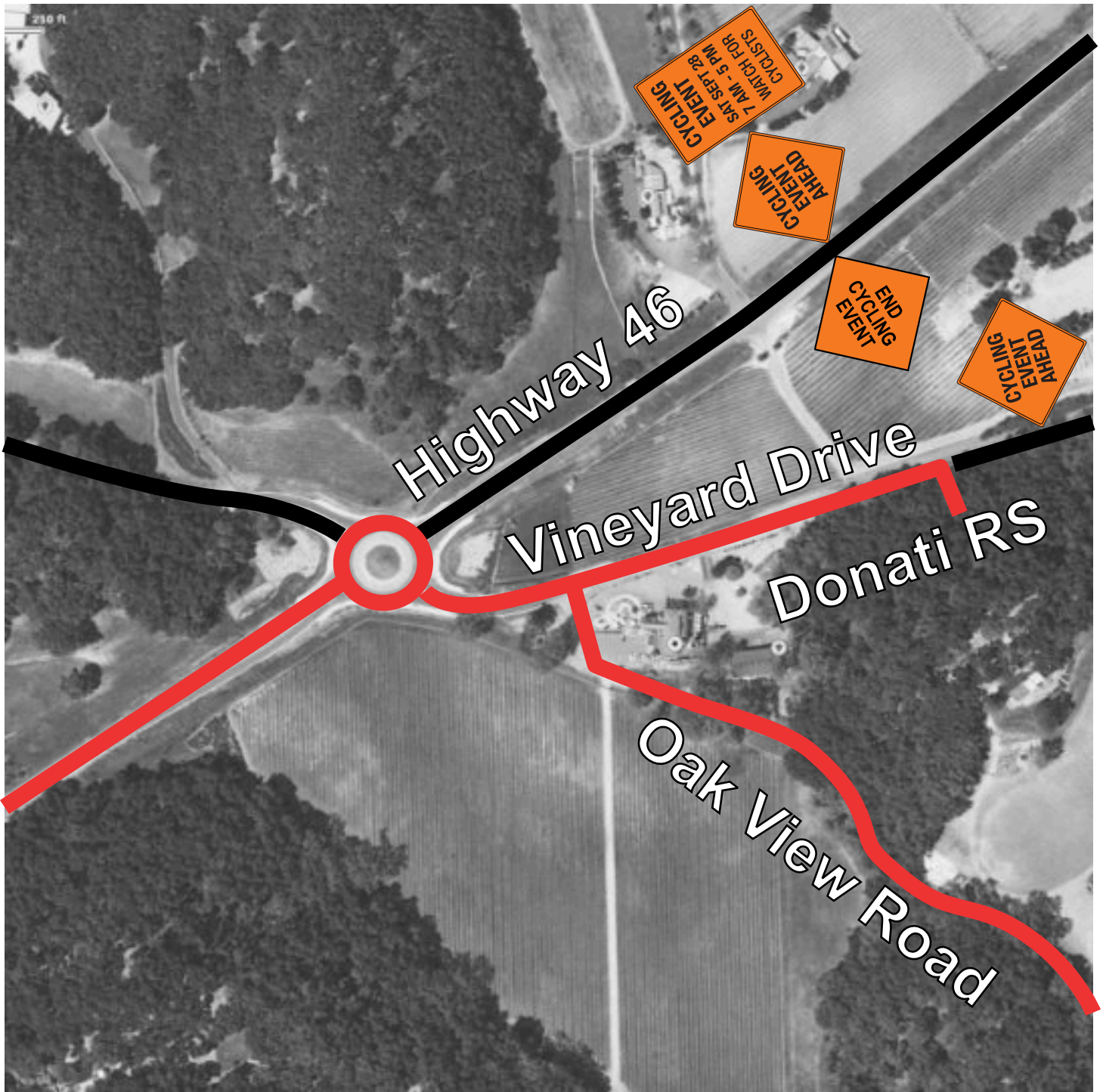
La Cruz Rest Stop Coordinates: 35.704801, -121.304563





## 11 Highway 46 & Old Creek Road

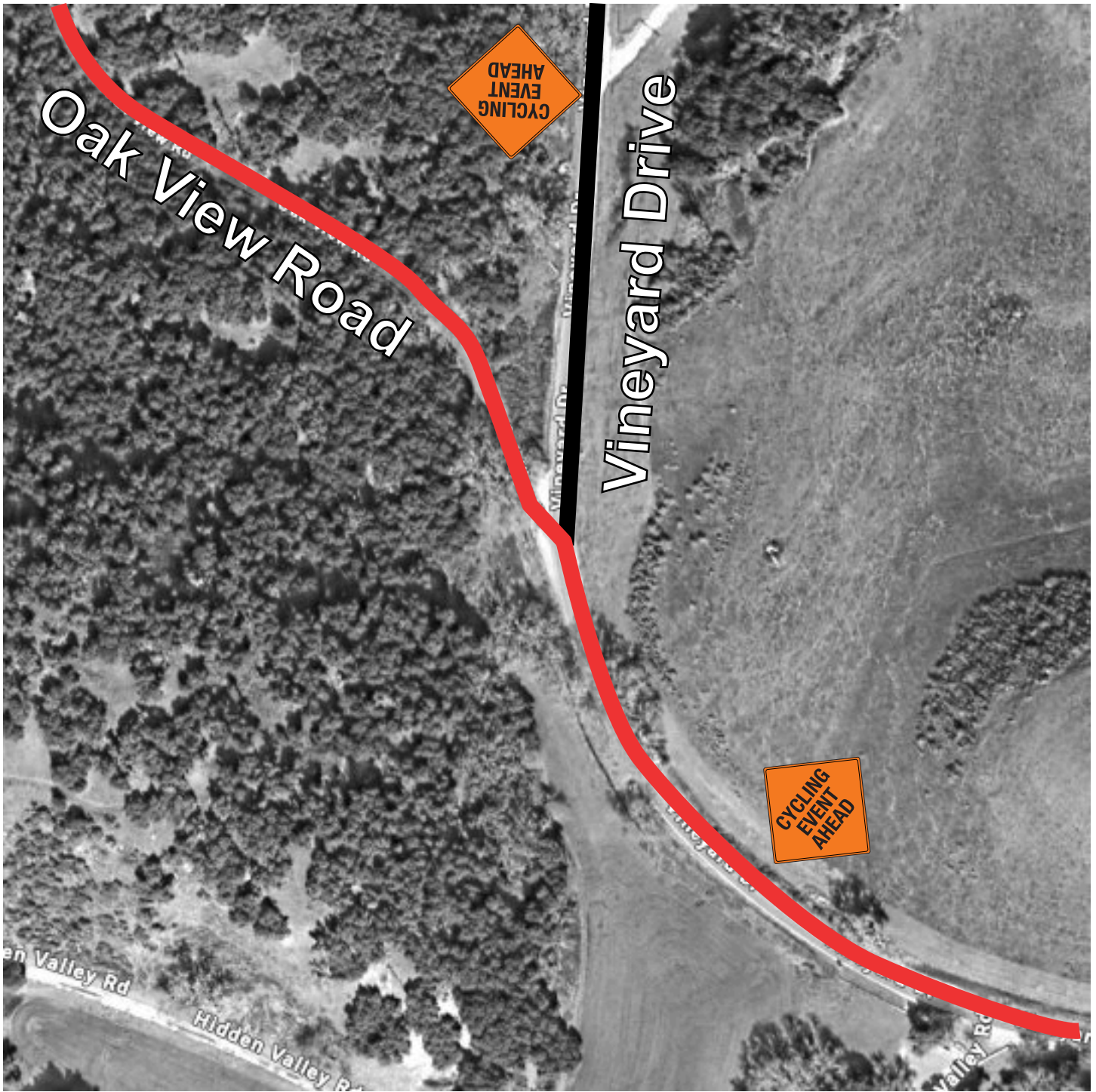
- Cycling Event Ahead    Highway 46    Eastbound    Before Intersection
- Cycling Event Ahead    Highway 46    Westbound    After Intersection
- Cycling Event Ahead    Old Cheek Rd.    Southbound    After Intersection (In open area just after the intersection)



## 12 Highway 46 & Vineyard Drive

■ Event Pre-Notification	Highway 46	Westbound	Before Intersection
■ Cycling Event Ahead	Highway 46	Westbound	Before Intersection
■ End Cycling Event	Highway 46	Eastbound	After Intersection
■ Cycling Event Ahead	Vineyard Dr.	Northbound	Before Donati RS





## 13 Vineyard Drive & Oak View Road

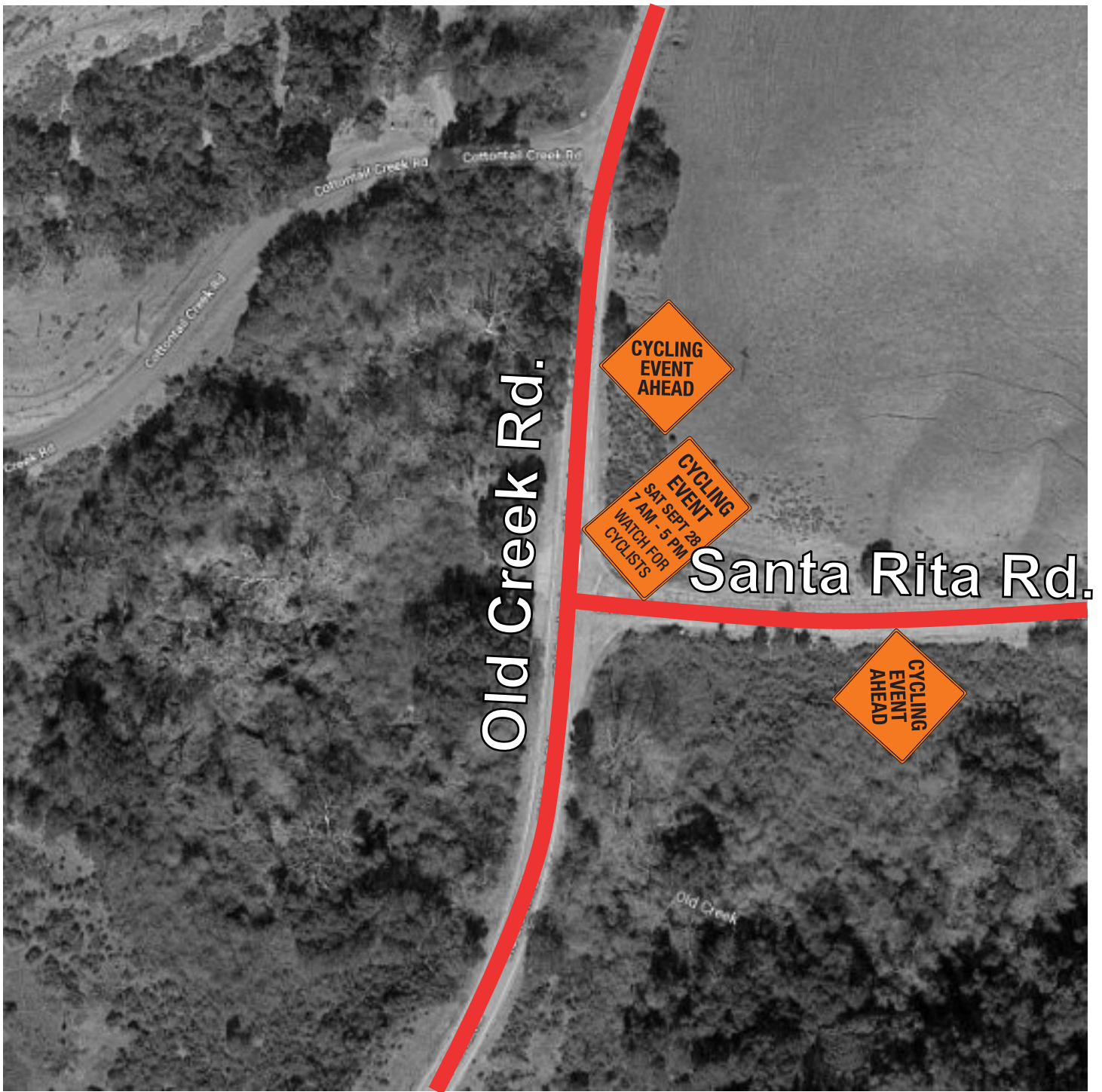
- Cycling Event Ahead    Vineyard Drive    Southbound    Before Intersection
- Cycling Event Ahead    Vineyard Drive    Northbound    Before Intersection





## 14 Vineyard Drive & Bethel Road

- **Cycling Event Ahead** Vineyard Drive Westbound Before All Way Stop Intersection



## 15 Old Creek Road & Santa Rita Road

- **Event Pre-Notification**    Old Cheek Rd. Northbound    At Intersection: Readable to All
- **Cycling Event Ahead**    Old Cheek Rd. Northbound    After Intersection
- **Cycling Event Ahead**    Santa Rita Rd. Eastbound    After Intersection